

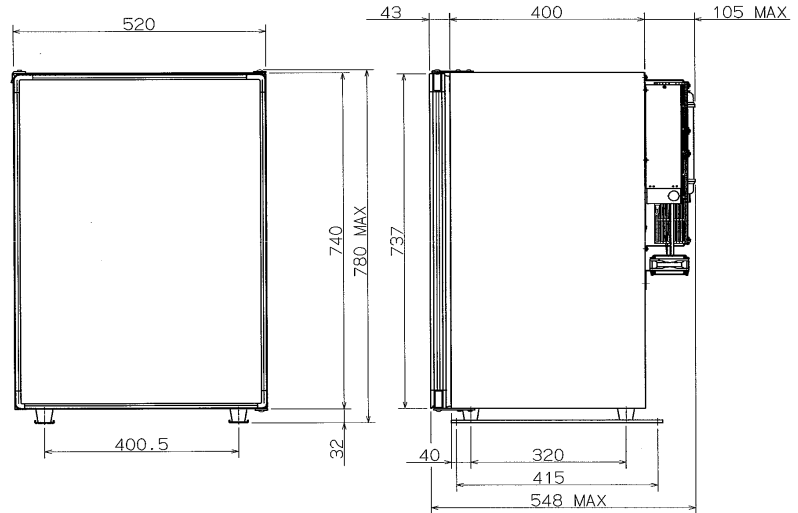
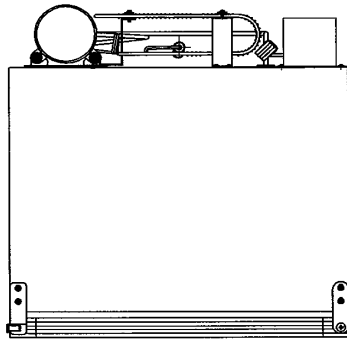
ENGEL

portable fridge-freezers

A LEGEND IN RELIABILITY



ST90E
Freestanding



TECHNICAL SPECIFICATION SHEET

FEATURES:

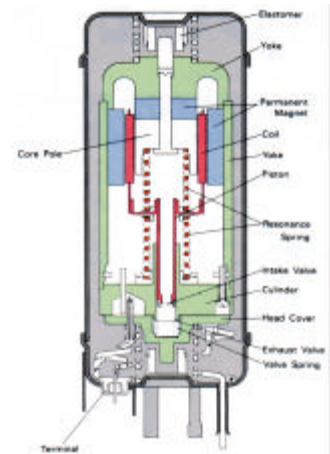
100% CFC Free
 Thermostat Controlled
 Energy Efficient Sawafuji Swing Motor
 Low DC Current Draw: 12V 3.3 Amps
 Automatic Voltage Selection AC / DC

Freestanding Cabinet Design
 Generator & Solar Panel Compatible
 Strong Construction
 Compact & Lightweight
 Noise Level: 38dB

Polyurethane Insulation
 Turbo Fan
 3 Year Manufacturers Warranty
 Reversible Door - LH / RH

SPECIFICATIONS:

Storage Volume:	Litres	80 Litres
Overall Dimensions:	H x W x D	780mm x 520mm x 548mm
Installation Dimensions:	D	505mm
Materials:		
Cabinet:		
Outer Enclosure:		Coated Steel Sheet
Inner Case:		High Impact Polystyrene
Insulation:		Polyurethane Foam
Door:		
Door Panel:		Steel Plate
Door Frame:		Polypropylene & Polyvinyl Chloride
Door Liner:		High Impact Polystyrene
Insulation:		Polyurethane Foam
Attachments:		
		Ice Cube Tray x 2
		Shelf x 2
		Drainage Pan x 1
		Door Pocket x 2
Input Voltage:	AC	AC 220 ~ 240V, 50Hz, 48W
	DC	DC 10.5 ~ 32V
Rated Amperage:	AC	AC 0.42A
	DC	DC 12V 3.3A, 24V 1.65A
Compressor Rating:		AC 19V, 50Hz, 33W
Refrigerant:		Tetrafluoroethane (R-134a)
Weight:		28kg



Sawafuji Swing Motor