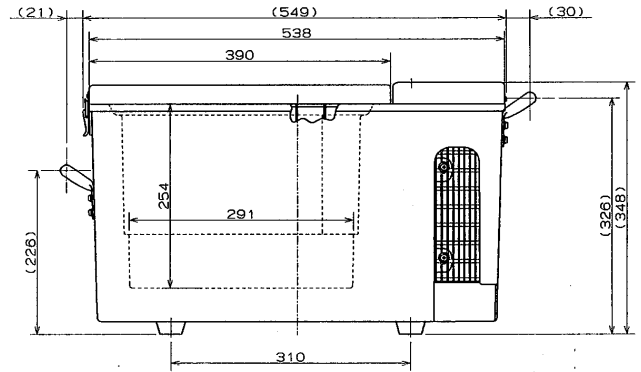
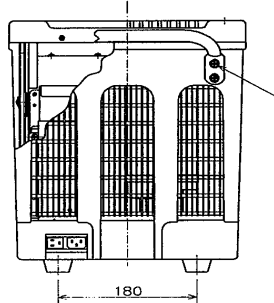


ENGEL

portable fridge-freezers

A LEGEND IN RELIABILITY

MT75E-H



TECHNICAL SPECIFICATION SHEET

FEATURES:

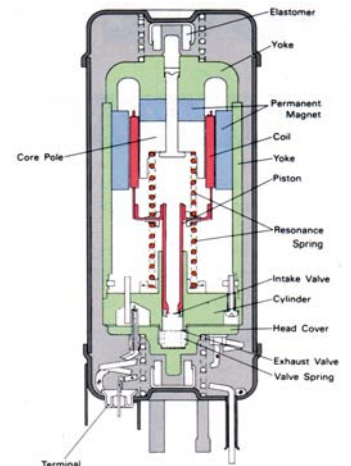
100% CFC Free
 Thermostat Controlled
 Energy Efficient Sawafuji Swing Motor
 Low DC Current Draw: 12V 3.3 Amps
 Automatic Voltage Selection AC / DC

Generator & Solar Panel Compatible
 Strong Construction
 Compact & Lightweight
 Noise Level: 38dB
 Polypropylene Cabinet

Polyurethane Insulation
 Carry Handles
 3 Year Manufacturers Warranty

SPECIFICATIONS:

Storage Volume:	Litres	15 Litres (21 x 375mm Cans)
Exterior Dimensions:	H x W x D	348mm x 548mm x 306mm
Interior Dimensions:	H x W x D	254mm x 291mm x 204mm
Exterior Finish:	Door	A.B.S. Resin
	Cabinet	Polypropylene
Interior Finish:	Door	A.B.S. Resin
	Cabinet	
Insulation:		Polyurethane (C.F.C. Free)
Input Voltage:	AC	AC 220 ~ 240V, 50Hz, 48W
	DC	DC 10.5 ~ 32V
Rated Amperage:	AC	AC 0.42A
	DC	DC 12V 3.3A, 24V 1.65A
Compressor Rating:		AC 19V, 50Hz, 33W
Refrigerant:		Dichlorodifluoromethane (R-134a)
Weight:		17kg



Sawafuji Swing Motor

ACCESSORIES:

Slide-lok - TSL515



Transit Bag - TBAG515G



Fridge Slide - 515SLIDE

Transit Base - TB515WP



Separator Frame - 515BSF



High Dome Lid - 515HDK



12 Volt Panel - APAN/ASPAN/BPAN

